

7.9.0 VW GOLFS, Jetta5, Skoda A5

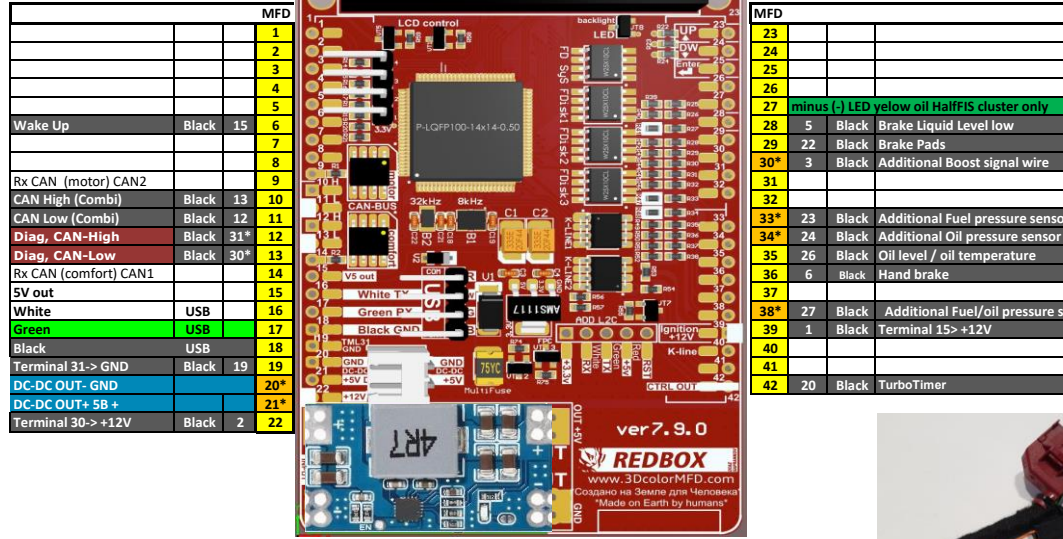
GENERAL SCHEME

| Instrument cluster pinout | Black connector | 3rd way | 3D MFD |
|--|----------------------------|---------|--------|
| Terminal 15> +12V | | | 39 |
| Terminal 30-> +12V | | | 22 |
| not used | Additional Boost sensor | | 30* |
| Fog lights | | | 4 |
| Warning contact for brake fluid level | | | 5 |
| Handbrake control switch | | | 6 |
| Transponder 1 | | | 7 |
| Transponder 2 | | | 8 |
| CAN-Network Drive train | | | 9 |
| CAN Low (Motor) | | | 10 |
| CAN High (Motor) | | | 11 |
| CAN Low (Combi) | | | 12 |
| CAN High (Combi) | | | 13 |
| CAN-Network Combi | | | 14 |
| Wake up dashboard | | | 15 |
| Coolant temp. sensor | | | 16 |
| Coolant temp. gauge | | | 17 |
| Fuel gauge sensor | | | 18 |
| Terminal 31-> GND | | | 19 |
| not used | TurboTimer | | 20 |
| not used | | | 21 |
| Brake pad wear indicator | | | 22 |
| not used | Additional Fuel pressure s | | 23 |
| not used | Additional Oil pressure se | | 24 |
| Oil pressure switch | | | 25 |
| Sensor for oil level / oil temperature (TOG) | | | 26 |
| not used | Additional Fuel/oil press | | 27 |
| Speed signal output (from model year 2008 - only with co | | | 28 |
| Speed signal input | | | 29 |
| Time setting via radio data | Diagnosis CAN-L | | 30* |
| Time setting via radio ground | Diagnosis CAN-H | | 31* |
| Time setting radio 5V | | | 32 |
| Ground connection (encoder ground) | | | 33 |
| Washer fluid level sensor | | | 34 |
| Sender for low coolant indicator | | | 35 |
| Temperature sensor for outside temperature | | | 36 |

30*, 31* - Use these pins if they are free.

On the bench operation

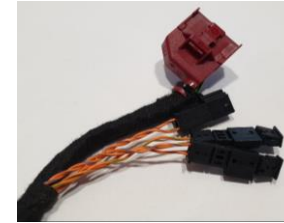
| | |
|--------------------|----|
| Terminal 15> +12V | 1 |
| Terminal 30-> +12V | 2 |
| Terminal 31-> GND | 19 |
| CAN Low (Combi) | 12 |
| CAN High (Combi) | 13 |



| | | MFD |
|-----------------------|-------|--------|
| | | 1 |
| | | 2 |
| | | 3 |
| | | 4 |
| | | 5 |
| | | 6 |
| | | 7 |
| | | 8 |
| | | 9 |
| Rx CAN (motor) CAN2 | | 9 |
| CAN High (Combi) | Black | 13 10 |
| CAN Low (Combi) | Black | 12 11 |
| Diag, CAN-High | Black | 31* 12 |
| Diag, CAN-Low | Black | 30* 13 |
| Rx CAN (comfort) CAN1 | | 14 |
| SV out | | 15 |
| White | USB | 16 |
| Green | USB | 17 |
| Black | USB | 18 |
| Terminal 31-> GND | Black | 19 19 |
| DC-DC OUT- GND | | 20* |
| DC-DC OUT+ 5B + | | 21* |
| Terminal 30-> +12V | Black | 2 22 |

| | | MFD |
|--|--|-----|
| | | 23 |
| | | 24 |
| | | 25 |
| | | 26 |
| | | 27 |
| | | 28 |
| | | 29 |
| | | 30* |
| | | 31 |
| | | 32 |
| | | 33* |
| | | 34* |
| | | 35 |
| | | 36 |
| | | 37 |
| | | 38* |
| | | 39 |
| | | 40 |
| | | 41 |
| | | 42 |

| 3d MFD connector | Black connector | Pinout Gateway |
|------------------|-----------------|--|
| | | 1 Terminal 30, fuse F24 in EM box -> +12V |
| | | 2 As pin 1 -> +12V |
| | | 3 Vacant |
| | | 4 K-wire (vacant) |
| | | 5 Convenience system data bus, CAN-Low |
| | | 6 Drive train data bus, CAN-Low |
| | | 7 Vacant |
| | | 8 Dash panel insert data bus, CAN-Low |
| 11 12 | | 9 Diagnosis CAN-L |
| 12 31 | | 10 Infotainment data bus, CAN-Low |
| | | 11 Terminal 31 (battery negative) -> GND |
| | | 12 Terminal 31 (battery negative) -> GND |
| | | 13 Wake-up wire, dash panel insert -> PIN 5 DB |
| | | 14 Terminal 15 -> +12V |
| | | 15 Convenience system data bus, CAN-High |
| | | 16 Vacant |
| | | 17 Vacant |
| 10 13 | | 18 Dash panel insert data bus, CAN-High |
| 13 30 | | 19 Diagnosis CAN-H |
| | | 20 Infotainment data bus, CAN-High |



- 20* If you have installed the DC-DC converter separately from the 3dMFD motherboard
Если вы установили DC-DC преобразователь отдельно от материнской платы
- 21* If you have installed the DC-DC converter separately from the 3dMFD motherboard
Если вы установили DC-DC преобразователь отдельно от материнской платы
- 30* If you do not have boost pressure data on the can-bus or have a third party boost sensor installed.
Если у вас нет данных давления наддува на can-bus или установлен сторонний датчик буста.
Free input for an optional Oil pressure sensor / Fuel pressure sensor/ LPG tank level / EGT
Свободный вход для подключения доп. датчиков: давления масла/ давления топлива / уровня в баке LPG
- 33* Free Input for an optional Oil pressure sensor / Fuel pressure sensor/ LPG tank level / EGT
Свободный вход для подключения доп. датчиков: давления масла/ давления топлива / уровня в баке LPG
- 34* Free Input for an optional Oil pressure sensor / Fuel pressure sensor/ LPG tank level / EGT
Свободный вход для подключения доп. датчиков: давления масла/ давления топлива / уровня в баке LPG
- 38* You can use this input to connect additional. sensors: oil pressure / fuel pressure / EGT.
Вы можете использовать это вход для подключения доп. датчиков: давления масла/ давления топлива / EGT.