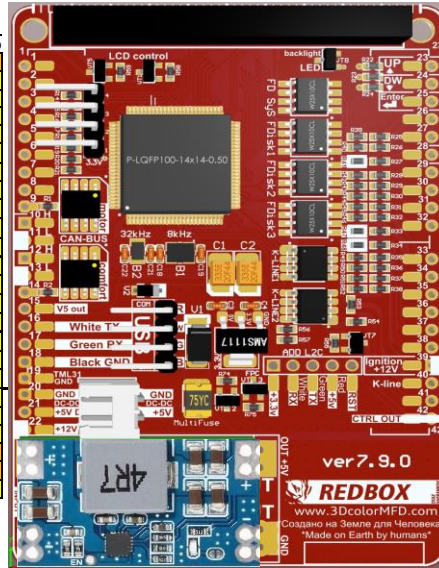


## 7.9.0 AUDI A6 C5.

### GENERAL SCHEME

1999/2000		
1 Terminal 15	39	17 Main beam
2 Brake pad wear	29	18 Left turn signal
3 Speedometer output 1		19 Not used
4 5 V supply		20 Terminal 58s
5 Fuel gauge sender	7	21 Driver's door contact
6 Tank warning OBD 2	4	22 Low coolant
7 Terminal 31 (sensor earth)	22	23 Terminal 30
8 Coolant temperature	19	24 Terminal 31 (load earth)
9 Terminal 31 (load earth)		25 Consumption signal
10 Oil pressure (high)		26 Right parking light
11 Engine speed signal		27 Left parking light
12 Air conditioner shutoff		28 Speedometer input
13 Electronic throttle/glow period w	28	29 Low brake fluid
14 Adaptive suspension	32	30 S-contact
15 Terminal 58d		31 Speedometer output 2
16 Trailer turn signal		32 ESP/TCS

DASHboard			MFD
Reversing light swith	Grey	31	1*
			2
			3
Low coolant	Blue	22	4
Washer fluid level	Grey	15	5
Stop Brake lamp warn.	Grey	14	6
Driver's door	Blue	21	7
			8
			9
CAN H (motor)	Green	18	10
CAN L (motor)	Green	19	11
CAN H (convenience)	Green	22	12
CAN L (convenience)	Green	23	13
CAN bus High (display)	Grey	5	12*
CAN bus Low (display)	Grey	6	13*
			14
5V out			15
White USB	USB		16
Green USB	USB		17
Black USB	USB		18
GND	Blue	24	19
DC-DC OUT- GND			20*
DC-DC OUT+ +5B			21*
+12V	Blue	23	22



MFD	DASHboard	
23	17 Grey	Up
24	18 Grey	Down
25	19 Grey	Reset
26	27 Green	Belts
27	16 Grey	Lamp Fault
28	29 Blue	Brake Liquid
29	2 Blue	Brake Pads
30	32 Grey	BOOST
31	25 Green	HOOD F120
32	30 Blue	TurboTimer
33*	32 Green	Headlight range control
33*	28 Grey	Fuel, OIL presser / EGT / LPG
34	6 Green	Central locking system
35	15 Green	Oil SensorG266
36	13 Green	Hand brake
37	12 Green	Baterie (61)
38*	21 Green	ABS
38*	29 Grey	Oil Pressure Sensor / EGT
39	1 Blue	Ignition
40	28 Green	K-line
41		
42*	30 Grey	TurboTimer

2000			
1 Menu control switch (menu)	23	17 On-board computer, left	
2 Menu control switch (out A)	24	18 On-board computer, right	
3 Menu control switch (out B)	25	19 On-board computer reset	
4 Menu control switch (enter)		20 Auxiliary heater radio remote control input	
5 CAN bus High (display)	12*	21 Summer /winter switching	
6 CAN bus Low (display)	13*	22 Auxiliary heater on	
7 Not used		23 Control group 1 Navigation	
8 Not used	3	24 Control group 2 Navigation	
9 Not used	2	25 Control group Telematics	
10 Not used		26 Not used	
11 Enable		27 Not used	
12 Clock	33*	28 Fuel, OIL presser / EGT / LPG	
13 Data	38*	29 Fuel, OIL presser / EGT / LPG	
14 Brake light	6	42*	30 TurboTimer
15 Washer fluid level	5	1*	31 F4 - REVERSING LIGHT SWITCH
16 Tail light/dipped beam (bulb d	27	30	32 BOOST

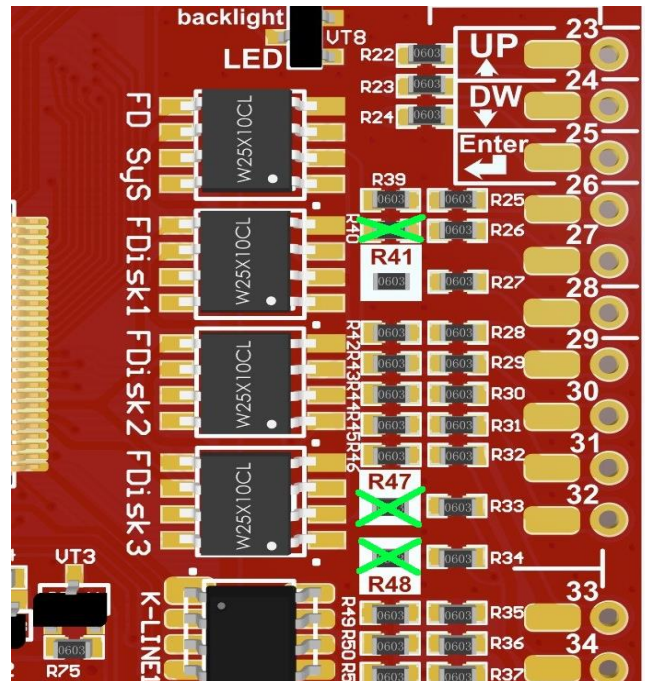
2000			
1 Not used		17 Transponder 2	
2 Transponder	10	18 CAN bus High (motor)	
3 External photosensor	11	19 CAN bus Low (motor)	
4 Not used		20 Not used	
5 W-wire	38*	21 ABS	
6 Central locking signal	34	12	22 CAN bus High (convenience)
7 Right turn signal	13	23	23 CAN bus Low (convenience)
8 External buzzer			24 Not used
9 External gong	31	25	25 Bonnet / Hood
10 Airbag			26 Filler neck compartment lid
11 Standing time output	26	27	27 Belt buckle
12 Bateria Terminal 61	37	40	28 K-wire
13 Parking brake	36		29 Ambient temperature input
14 CHECK			30 Terminal 58de
15 Oil level/oil temperature	35		31 Selector lever position display
16 Oil filter pressure	33*	32	32 Headlight range control

1999		
1 Not used		17 Transponder 2
2 Transponder 1		18 Not used
3 Not used		19 Not used
4 Not used		20 Not used
5 W-wire		21 Not used
6 Tailgate/boot lid (midline version only)		22 Not used
7 Brake pad (not used at		23 Not used
8 Input for external buzzer actuation (not used		24 Not used
9 Input for external gong actuation (not used		25 Not used
10 Tank warning output signal for engine control		26 Not used
11 Standing time output		27 Not used
12 Air conditioner shutoff		28 Not used
13 Parking brake		29 Terminal 58d (external dimmer potentiometer)
14 Electronic throttle		30 Speedometer output 2
15 Side light		31 Not used
16 Not used		32 Not used

1999 -> 2000		
Green	From pin №	Ha/ To pin №
7	коричнево зеленый / brown green	-> 2 blue connector
10	пустой / empty	-> 6 blue connector
12	голубой синий / blue dark blue	-> 12 blue connector
29	->	-> 30 green connector
21	->	-> 15 green connector
15		remove

Blue	From pin №	Green Ha/ To pin №
2	черно зеленый / black green	-> 7
6	Yellow white	-> 10
12	голубой/ blue	-> 12
19	orange red	-> 21
25	Green blue	-> 28

### Remove resistors



1*	If you have add a wire of engaging reverse gear to cluster. Если вы добавили в кластер провод включения задней передачи.
12	Connect if you have NOT RNS-E stereo
13	
12	Connect if you have RNS-E stereo
13	
20*	If you have installed the DC-DC converter separately from the 3dMFD motherboard Если вы установили DC-DC преобразователь отдельно от материнской платы
21*	If you have installed the DC-DC converter separately from the 3dMFD motherboard Если вы установили DC-DC преобразователь отдельно от материнской платы
33*	If you have an optional LPG tank level / Fuel presser sensor/ Head range control warning Если у вас есть дополнительные датчики уровня в баке LPG / датчик давления топлива / контроль диапазона головки / EGT
38*	If you have an optional Oil pressure sensor / EGR sensor Если у вас есть опциональный датчик давления масла / датчик EGT
42*	This is the control output of the turbo timer relay. Это управляющий выход реле турботаймера.